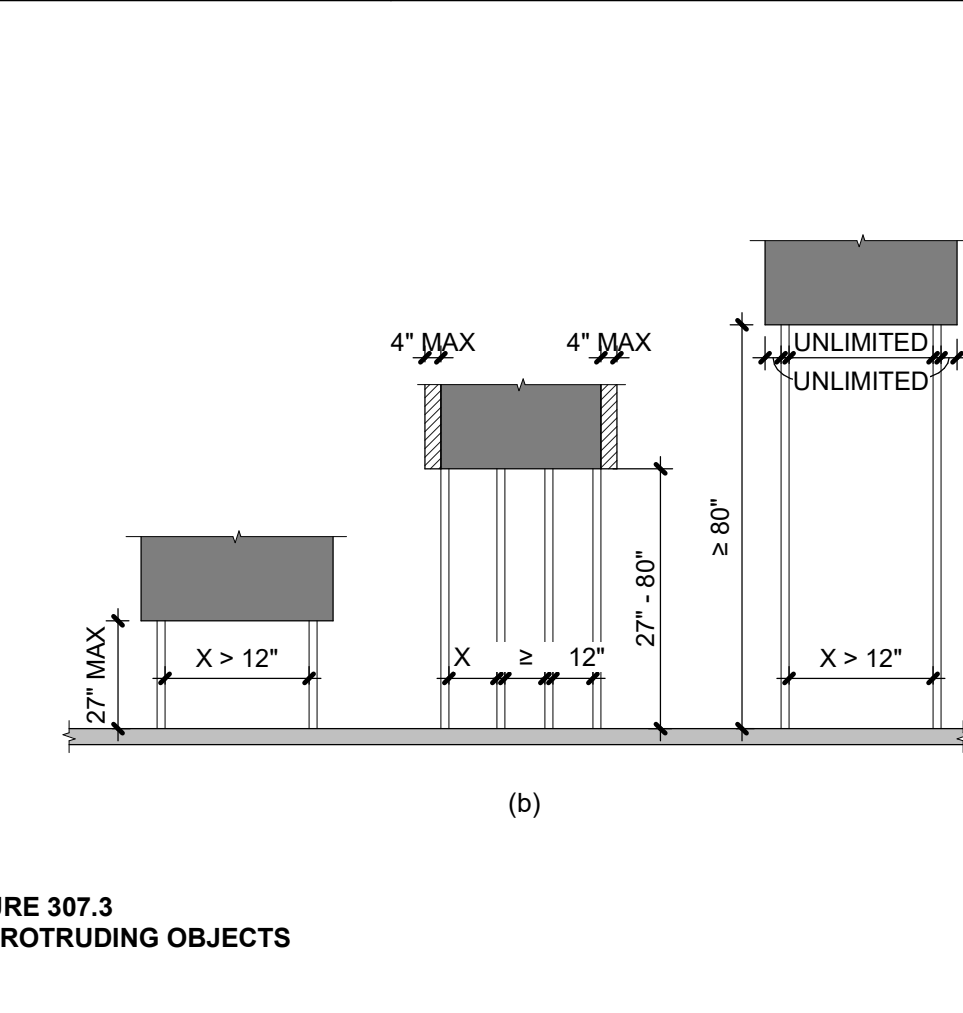
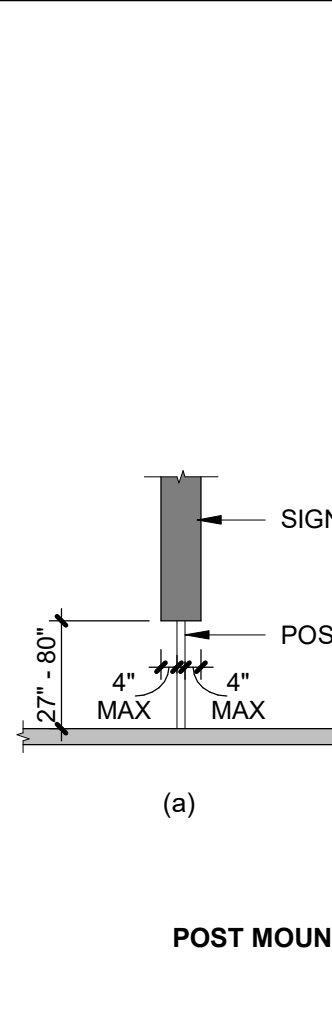
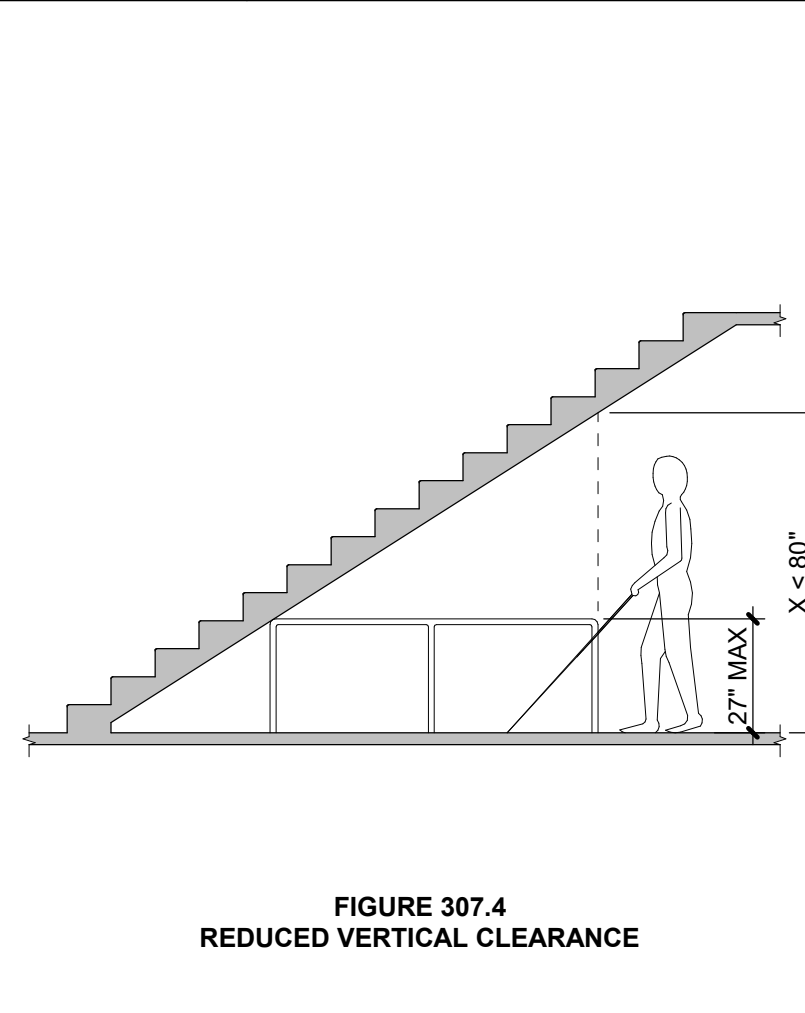
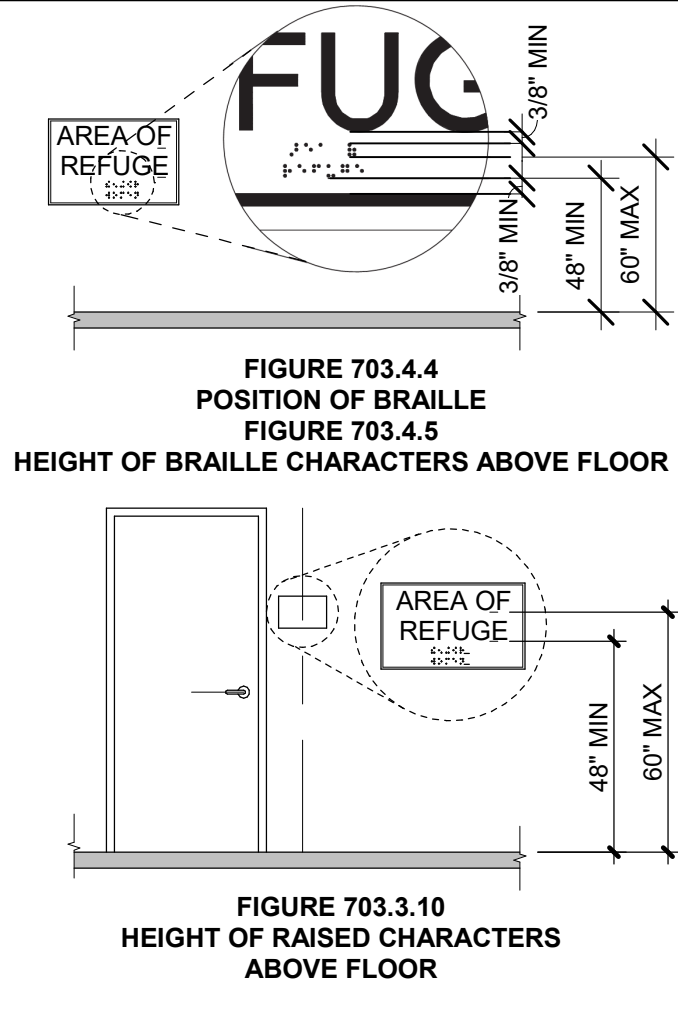
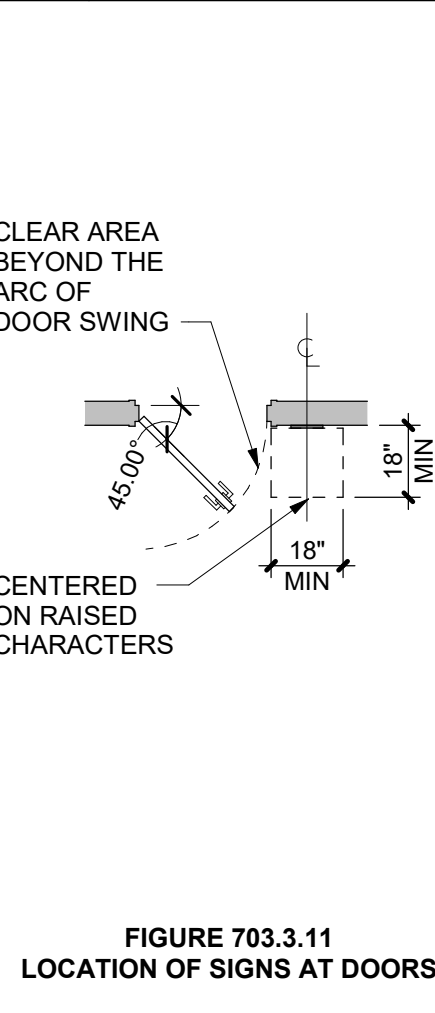
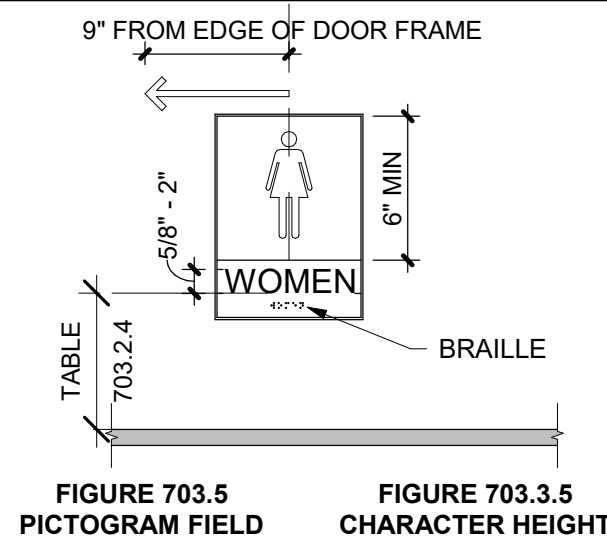


NOTE:
SIGNAGE TO COMPLY WITH ICC A117.1-2009 OR GOVERNING AUTHORITY.
PICTOGRAMS AND THEIR FIELD SHOULD HAVE A NON-GLAZE FINISH.
PICTOGRAMS SHALL CONTRAST WITH THEIR FIELD WITH EITHER A LIGHT PICTOGRAM ON A DARK FIELD OR A DARK PICTOGRAM ON A LIGHT FIELD.
PICTOGRAMS SHOULD HAVE TEXT DESCRIPTORS LOCATED DIRECTLY BELOW THE PICTOGRAM FIELD.
PICTOGRAMS AND LETTERING TO BE RAISED 1/32".

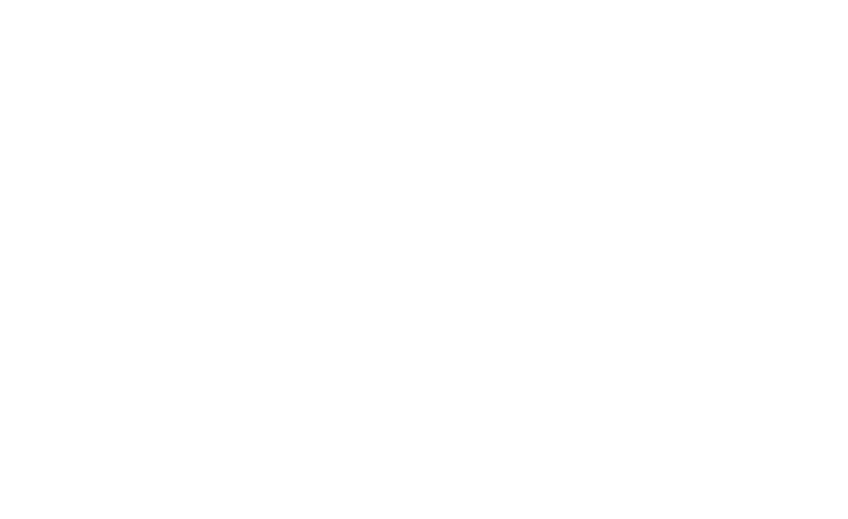
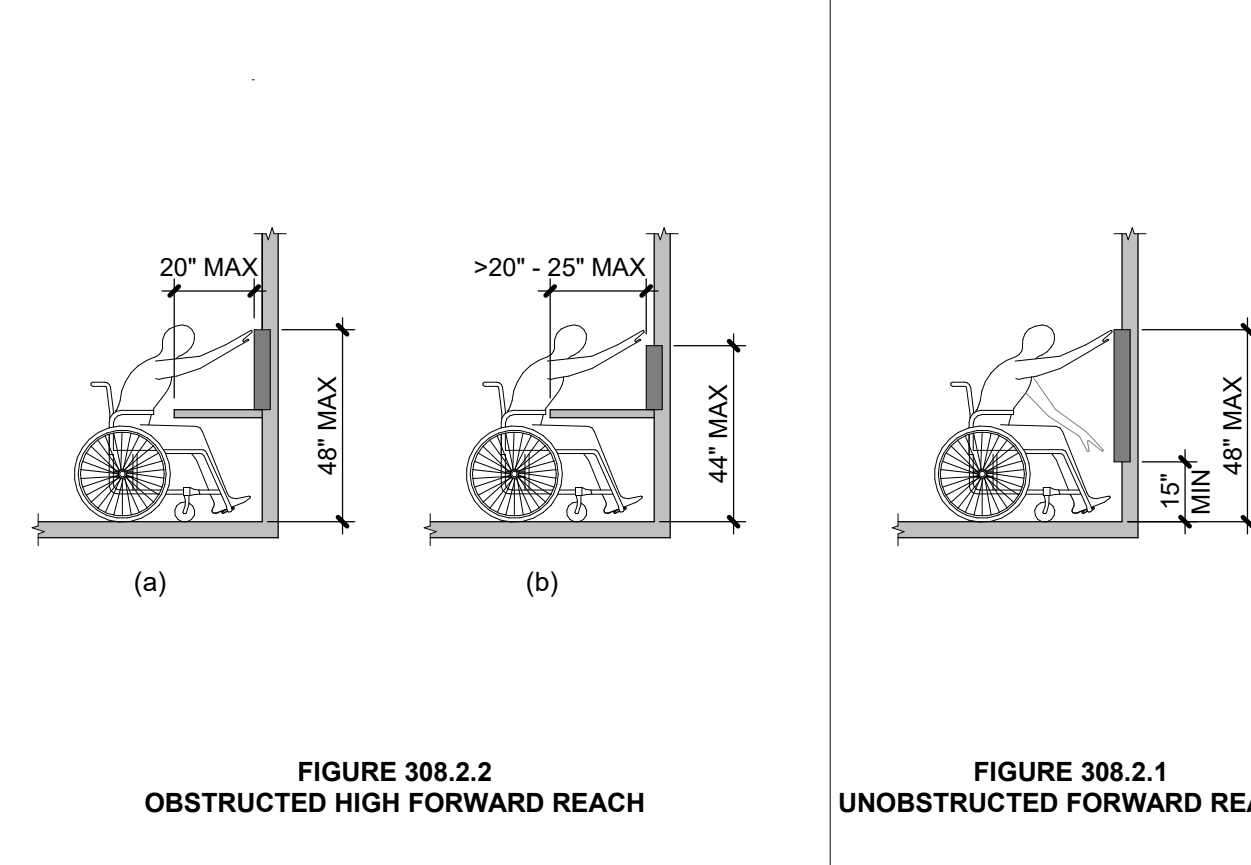
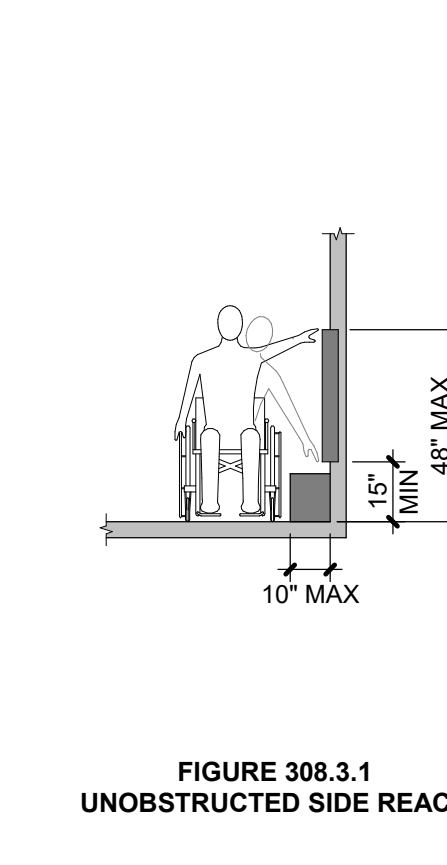
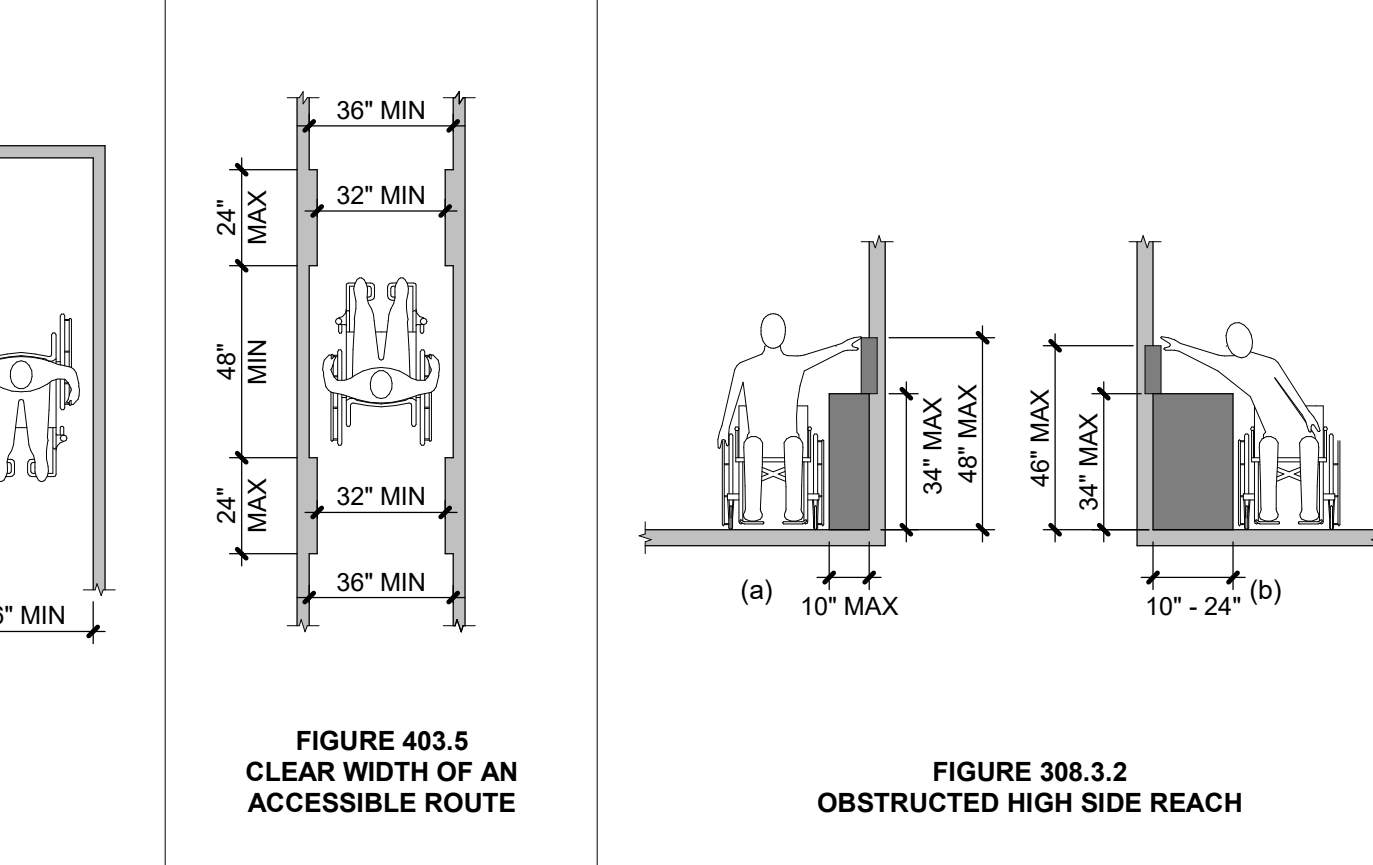
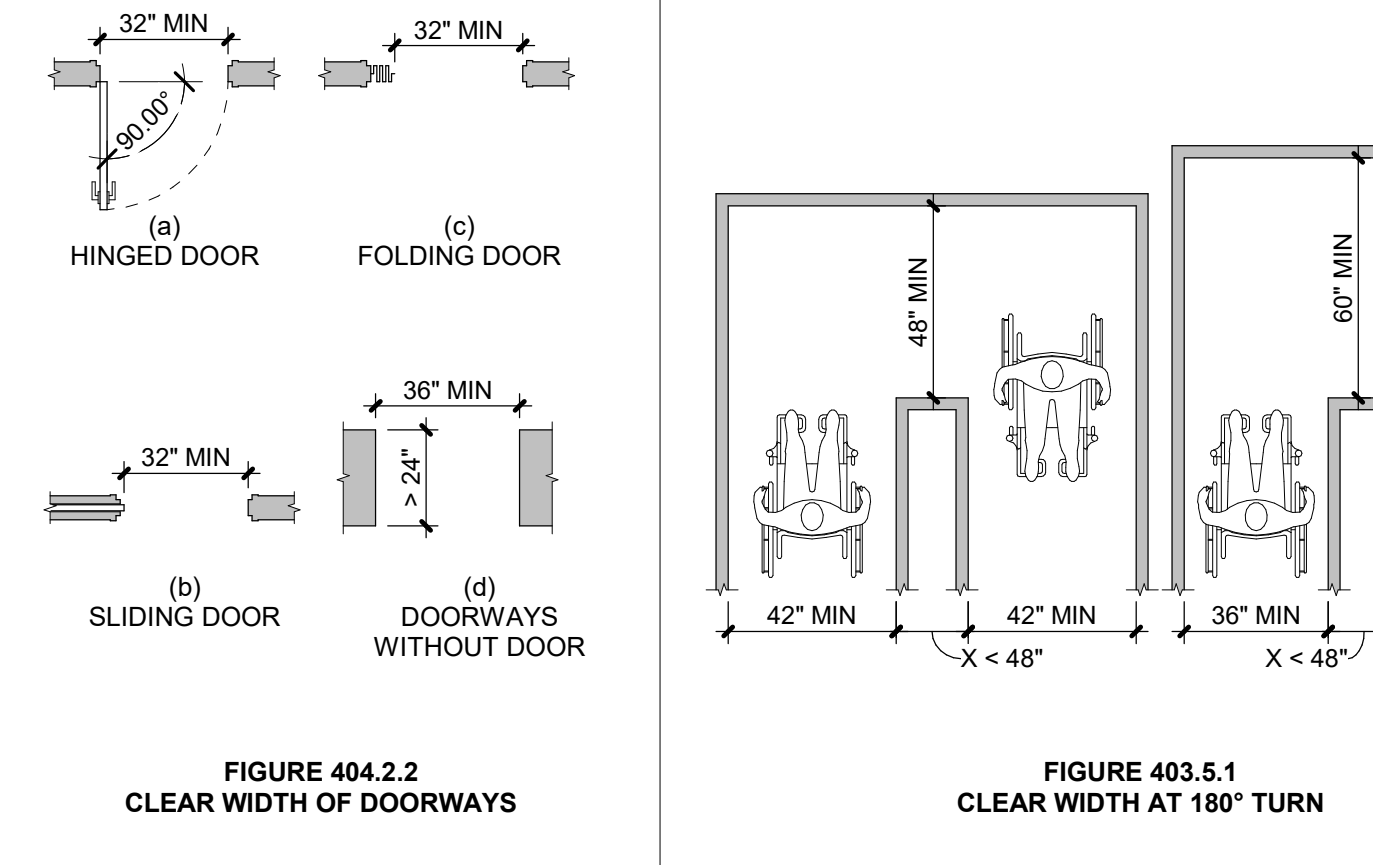
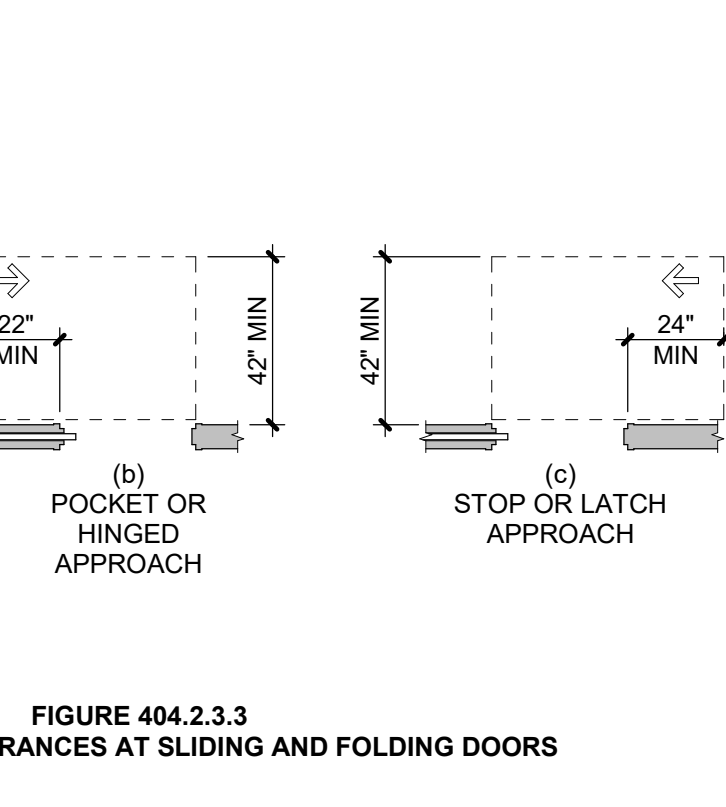
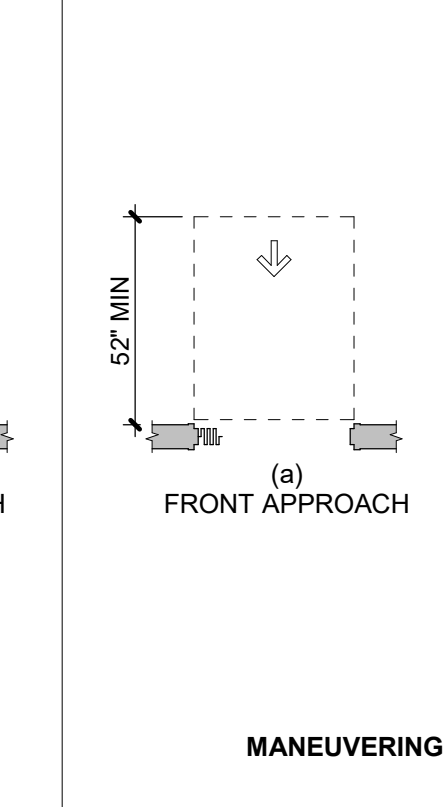
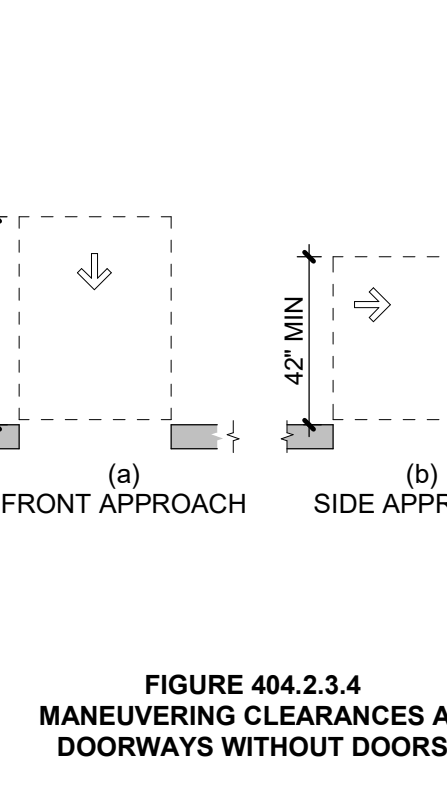
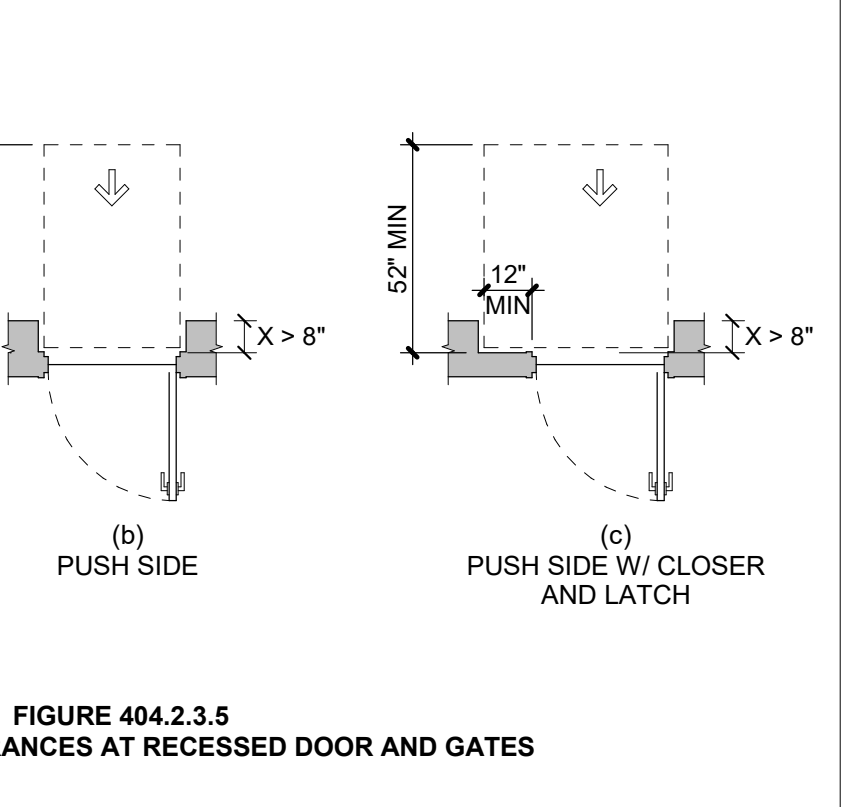
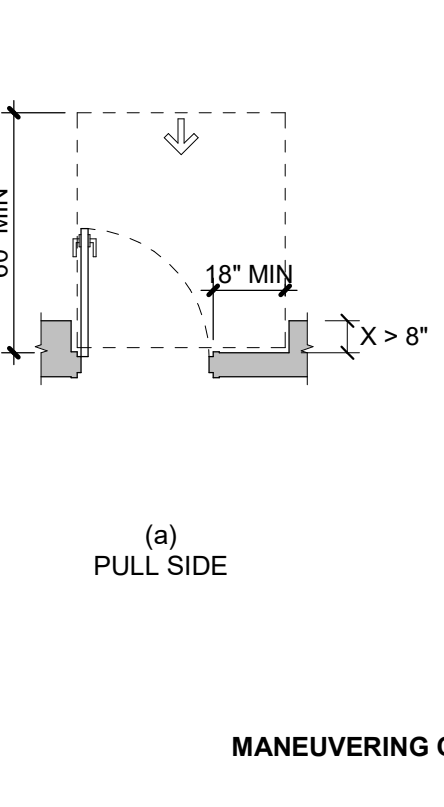
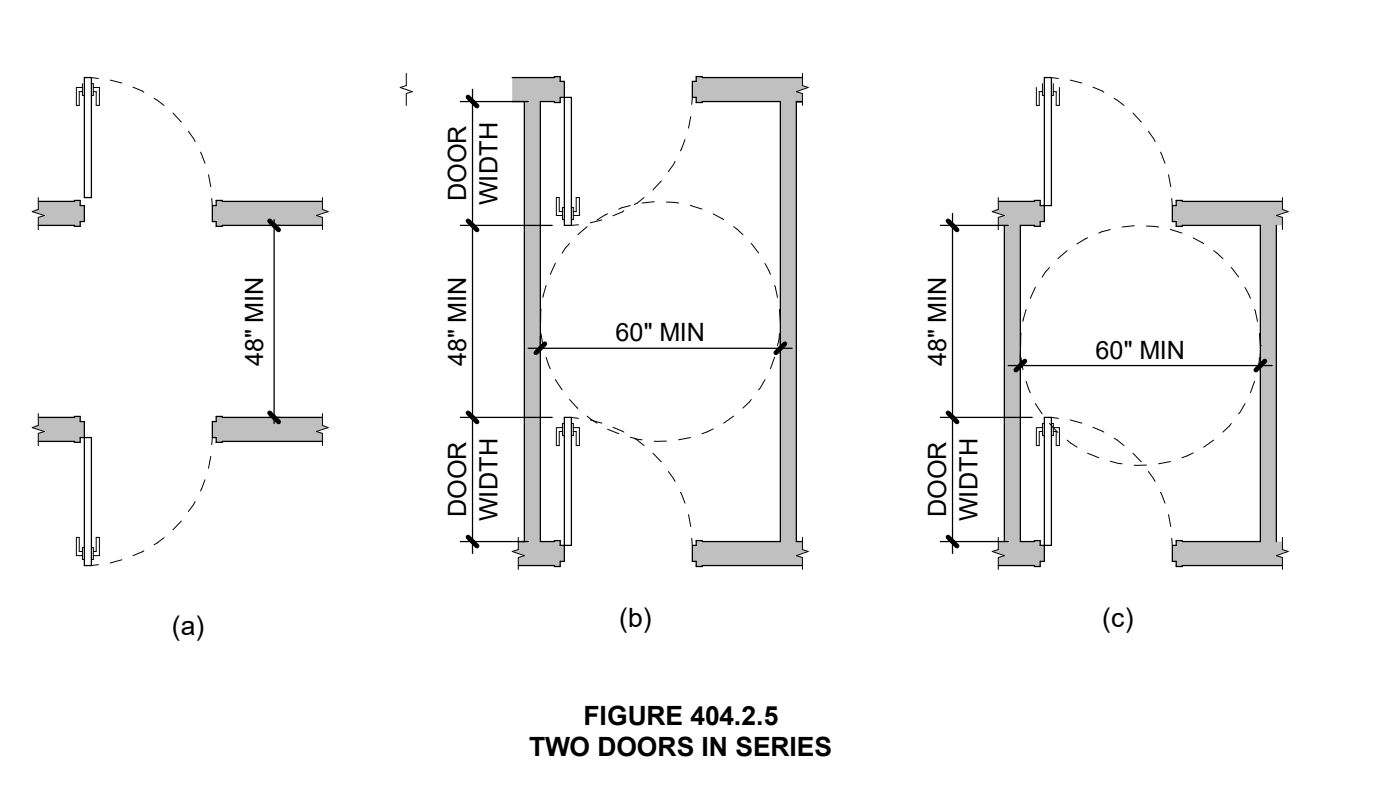
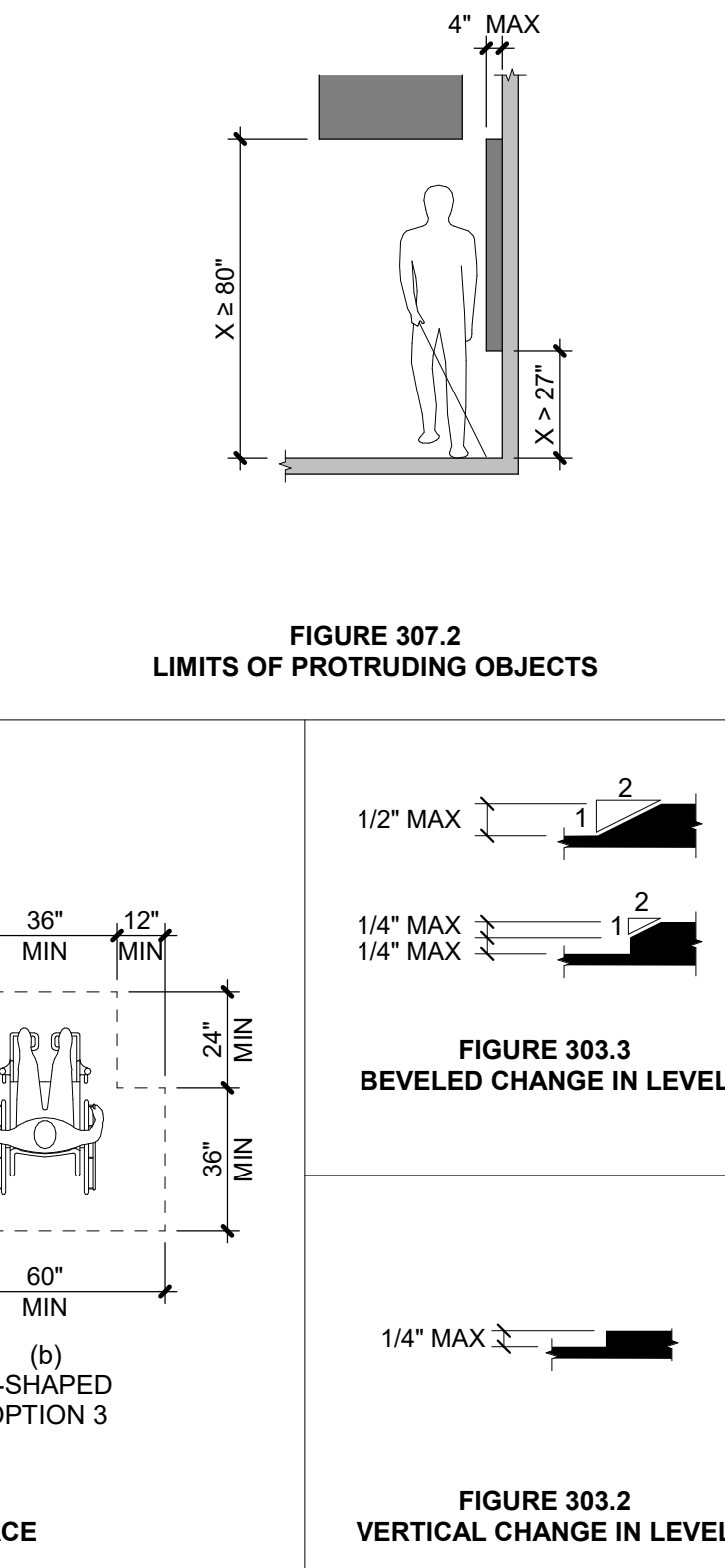
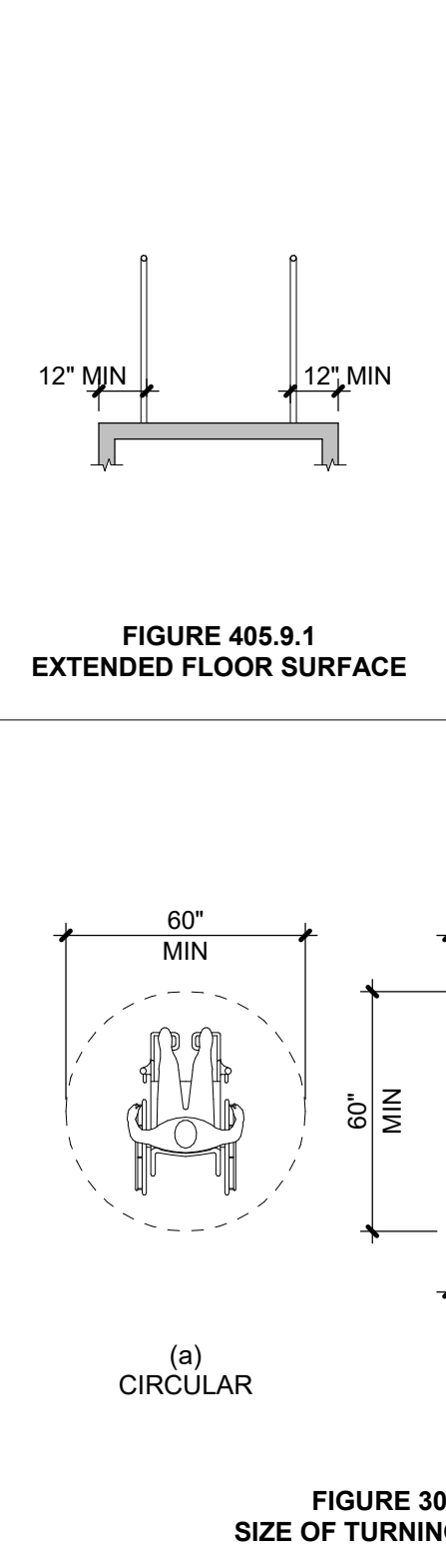
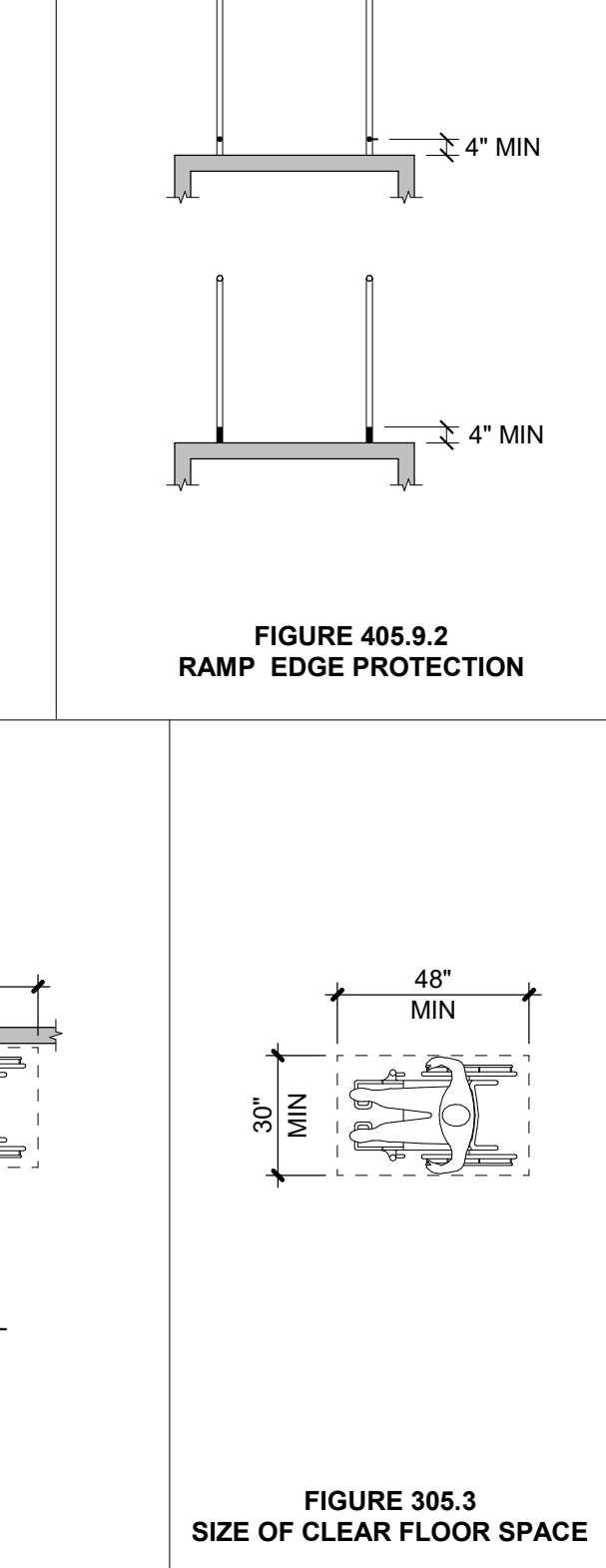
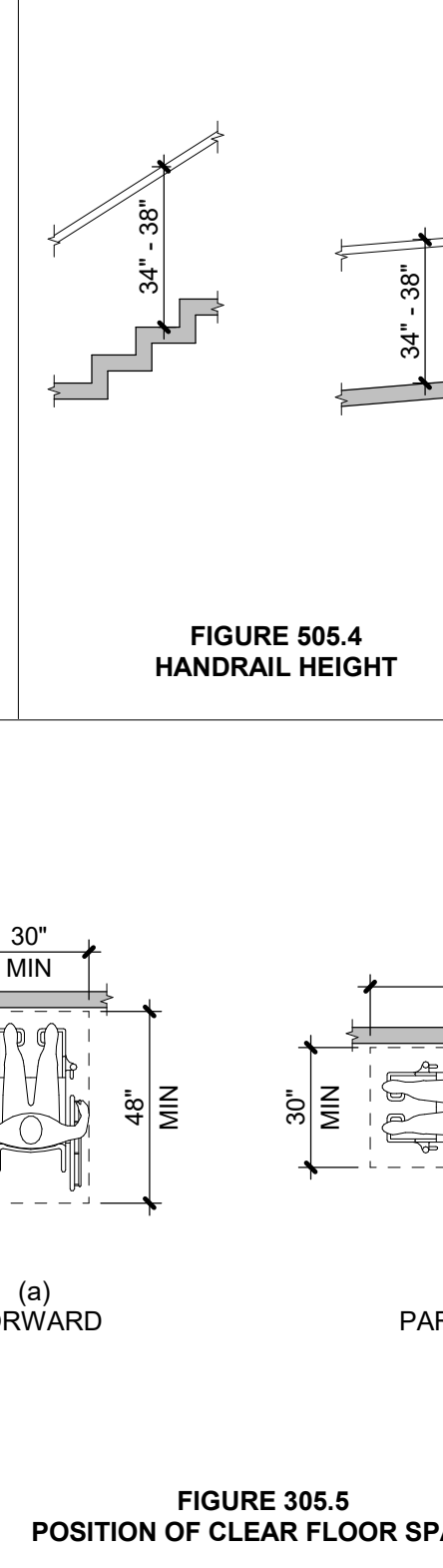
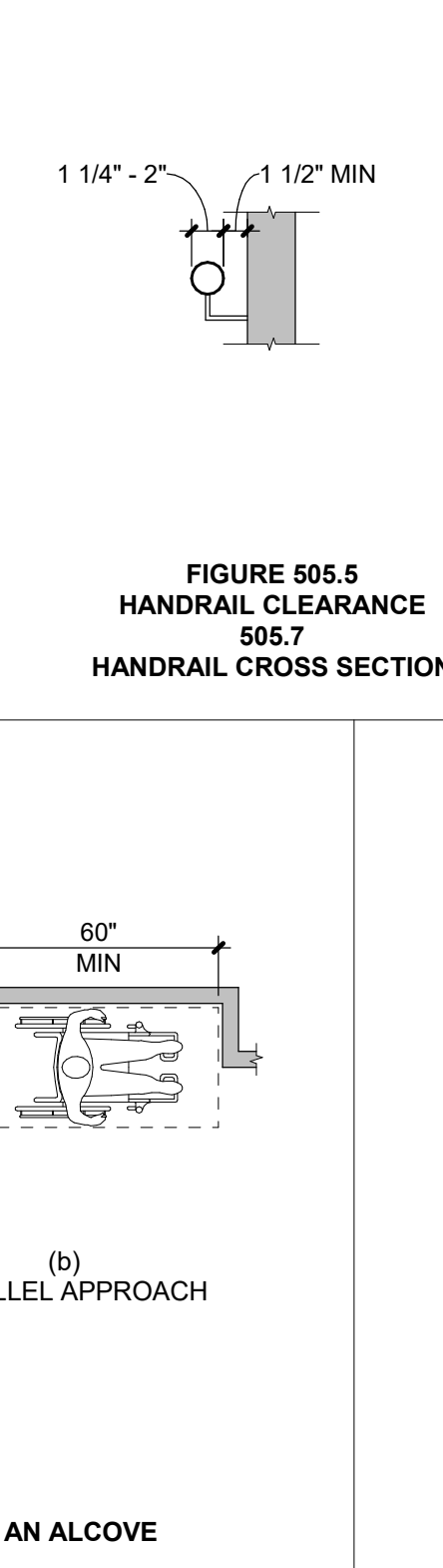
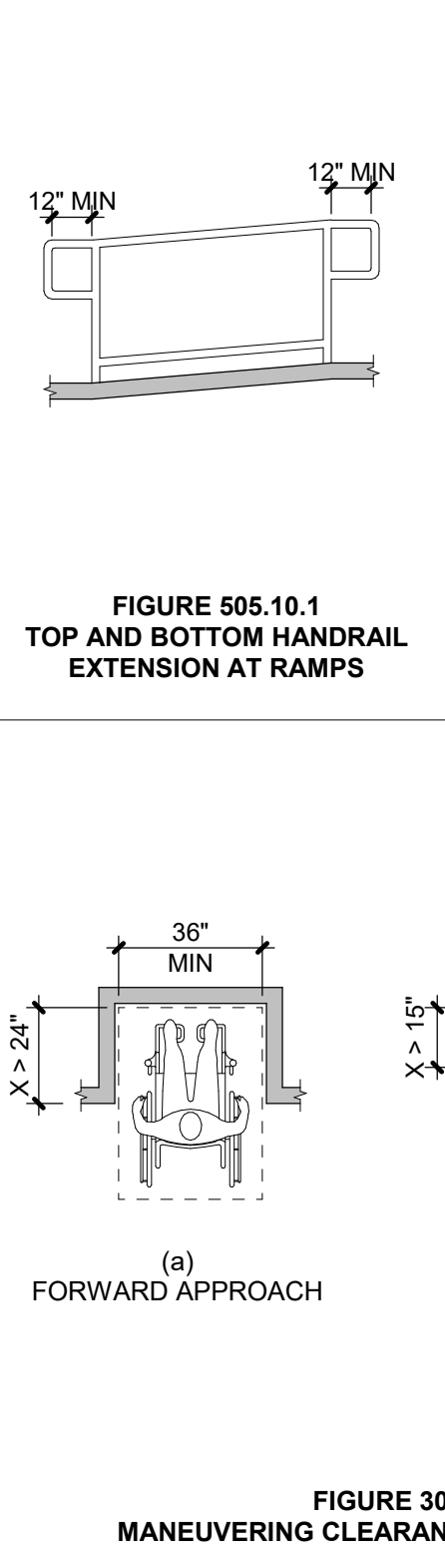
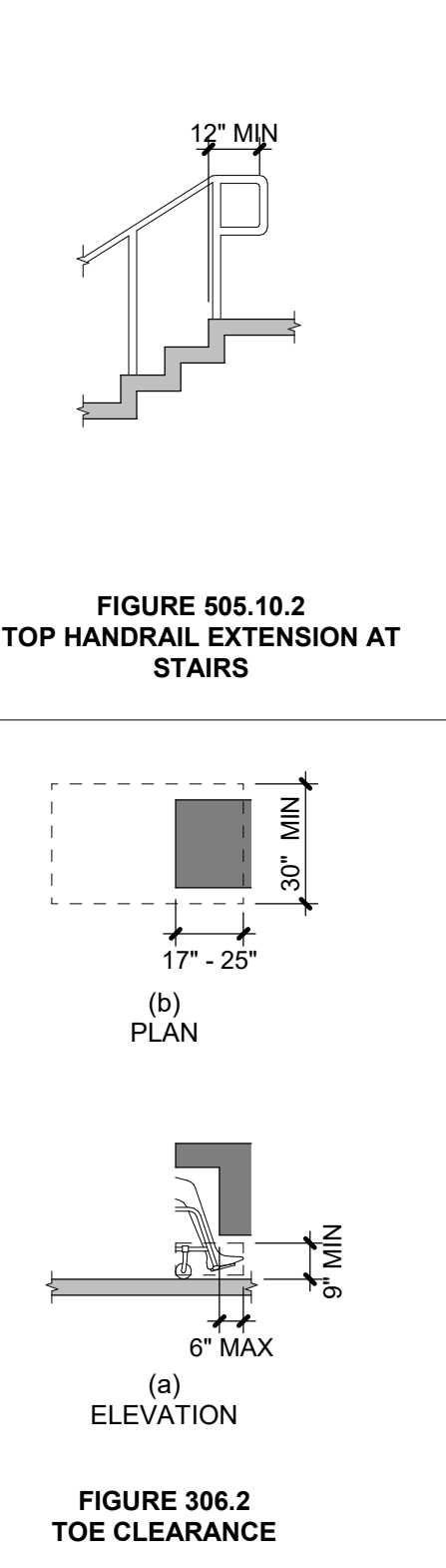
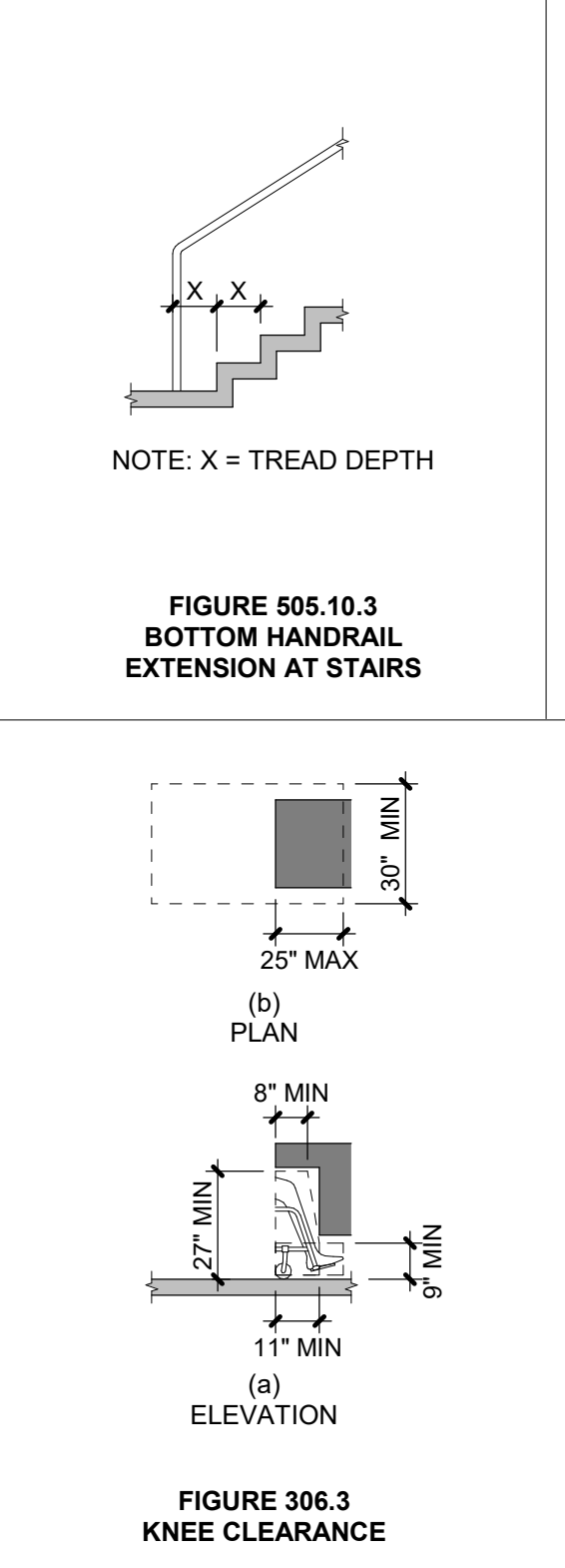
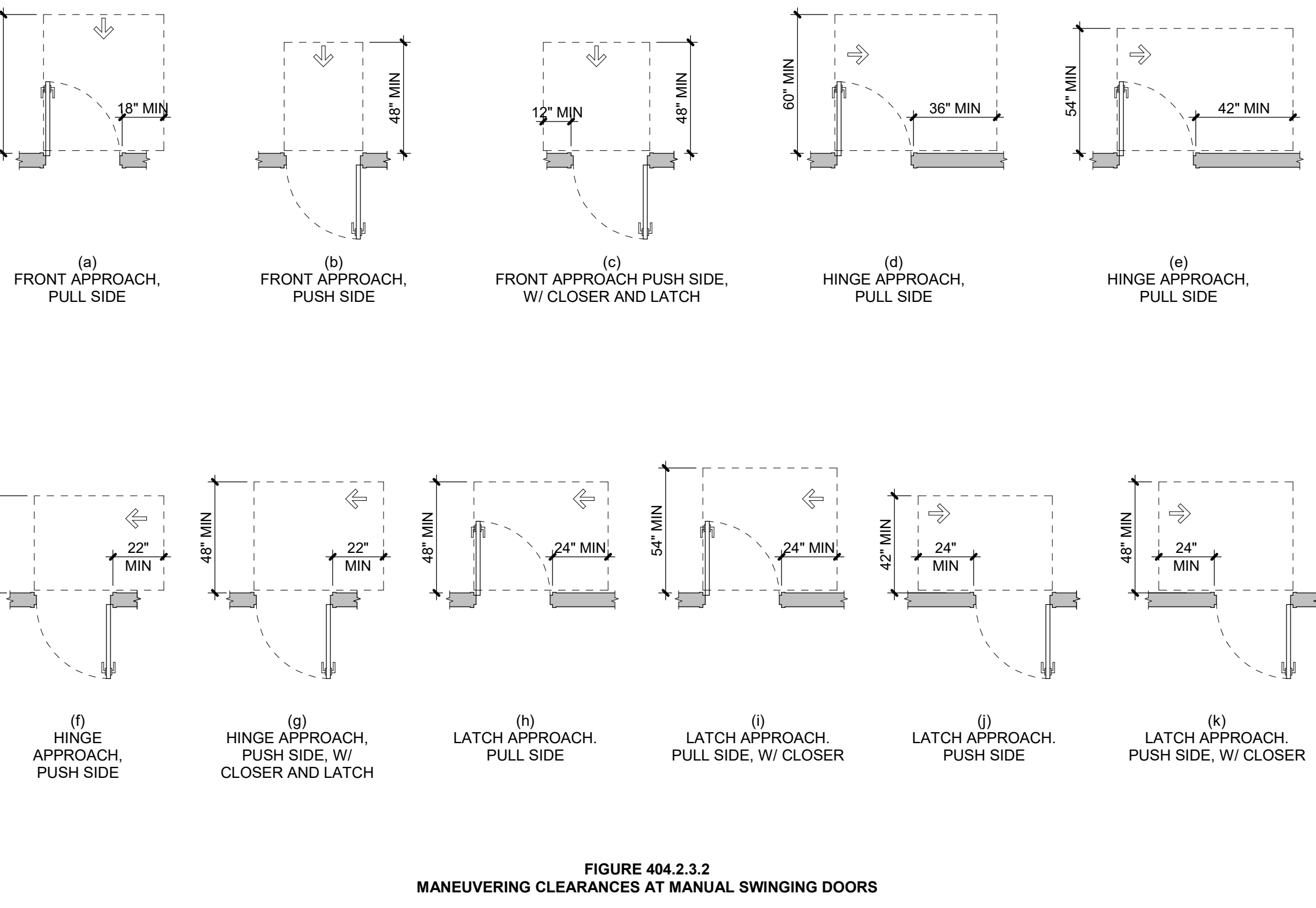
HEIGHT ABOVE FLOOR TO BASELINE OF CHARACTER	HORIZONTAL VIEWING DISTANCE	MINIMUM CHARACTER HEIGHT
40 inches to less than or equal to 70 inches	Less than 6 feet	5/8 inch
	6 feet and greater	5/8 inch, plus 1/8 inch per foot of viewing distance above 6 feet
Greater than 70 inches to less than or equal to 120 inches	Less than 15 feet	2 inches
	15 feet and greater	2 inches, plus 1/8 inch per foot of viewing distance above 15 feet
Greater than 120 inches	Less than 21 feet	3 inches
	21 feet and greater	3 inches, plus 1/8 inch per foot of viewing distance above 21 feet

TABLE 703.2.4 VISUAL CHARACTER HEIGHT



ACCESSIBILITY GENERAL NOTES

- ALL DIMENSIONS ARE FROM FINISH FACE TO FINISH FACE.
- REFERENCED STANDARD: 2009 ICC/ANSI A117.1 ACCESSIBLE AND USABLE BUILDINGS AND FACILITIES.
- ALL INDICATED NOTES AND DIAGRAMS ILLUSTRATED ADDRESS COMMON CONDITIONS WITHIN THE REFERENCE STANDARD. FOR CONDITIONS NOT DESCRIBED, THE CONTRACTORS SHOULD REFERENCE THE COMPLETE 2009 ICC/ANSI A117.1 ACCESSIBLE AND USABLE BUILDINGS AND FACILITIES.



DESIGNER / BUILDER
ARCO
DESIGN/BUILD INDUSTRIAL
44 SOUTH BROADWAY, SUITE 1003
WHITE PLAINS, NY 10601
P: 914.821.5535 F: 914.306.6010

ADBI / DESIGN SERVICES
Lincoln Equities Group, LLC

PROJECT TITLE
LINCOLN BREWSTER - BLDG B
NY-312 & PUGSLEY RD, SOUTHEAST, NY 10509

ARCHITECT
ADBI / DESIGN SERVICES LLC
44 SOUTH BROADWAY, SUITE 1003
WHITE PLAINS, NY 10601

CIVIL ENGINEER
LANGAN ENGINEERING
300 KIMBALL DRIVE
PARSIPPANY, NJ 07054

STRUCTURAL ENGINEER
SMITH ROBERTS AND ASSOCIATES, INC.
6501 BLUFF RD.
INDIANAPOLIS, INDIANA 46217

MECHANICAL ENGINEER
NATIONAL DESIGN/ BUILD SERVICES
11840 BORMAN DRIVE
ST. LOUIS, MO 63146

ELECTRICAL ENGINEER
FBX ENGINEERING
5 CHRISTY DRIVE, SUITE 307
CHADDS FORD, PA 19317

PLUMBING ENGINEER
MCCARTHY ENGINEERING ASSOCIATES, INC.
315 EAST SECOND STREET
BOYERTOWN, PA 19512

FIRE PROTECTION ENGINEER
S A COMUNALE CO. INC.
2900 NEWPARK DRIVE
BARBERTON, OH 44203

SEAL

SUBMITTALS
NO. DATE DESCRIPTION
05.27.2022 PROGRESS SET

PROJECT NO. AS286-211/NY131 **DRAWN BY** ARCO

SHEET TITLE
ACCESSIBILITY DETAILS - ICC A117.1-2009

SHEET NO.

G-0.10-A117.1